



THE STABLES



Private Suite



928 ft²



Historic Barn



2 Bunkbeds 1 King



1 Bath

Granite Lodge



8 min.



4 min.

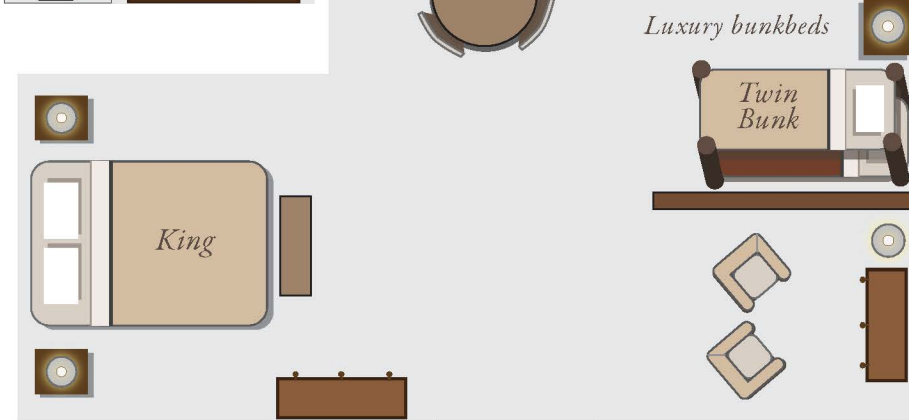
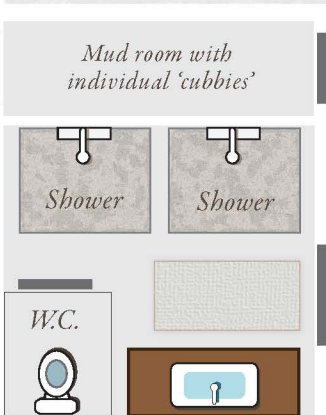
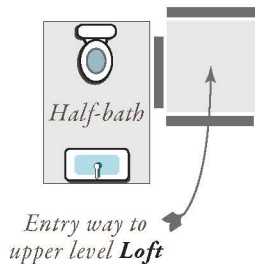
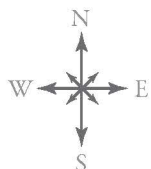
Rod & Gun



4 min.



2 min.



A short stroll to the Blue Canteen



Booking tip!

The Stables can be reserved in addition with upper level **Loft** and adjacent lower level **Wrangler**. This arrangement is perfect for larger groups of up to 15 guests.

Rear entry way onto The Den Lawn